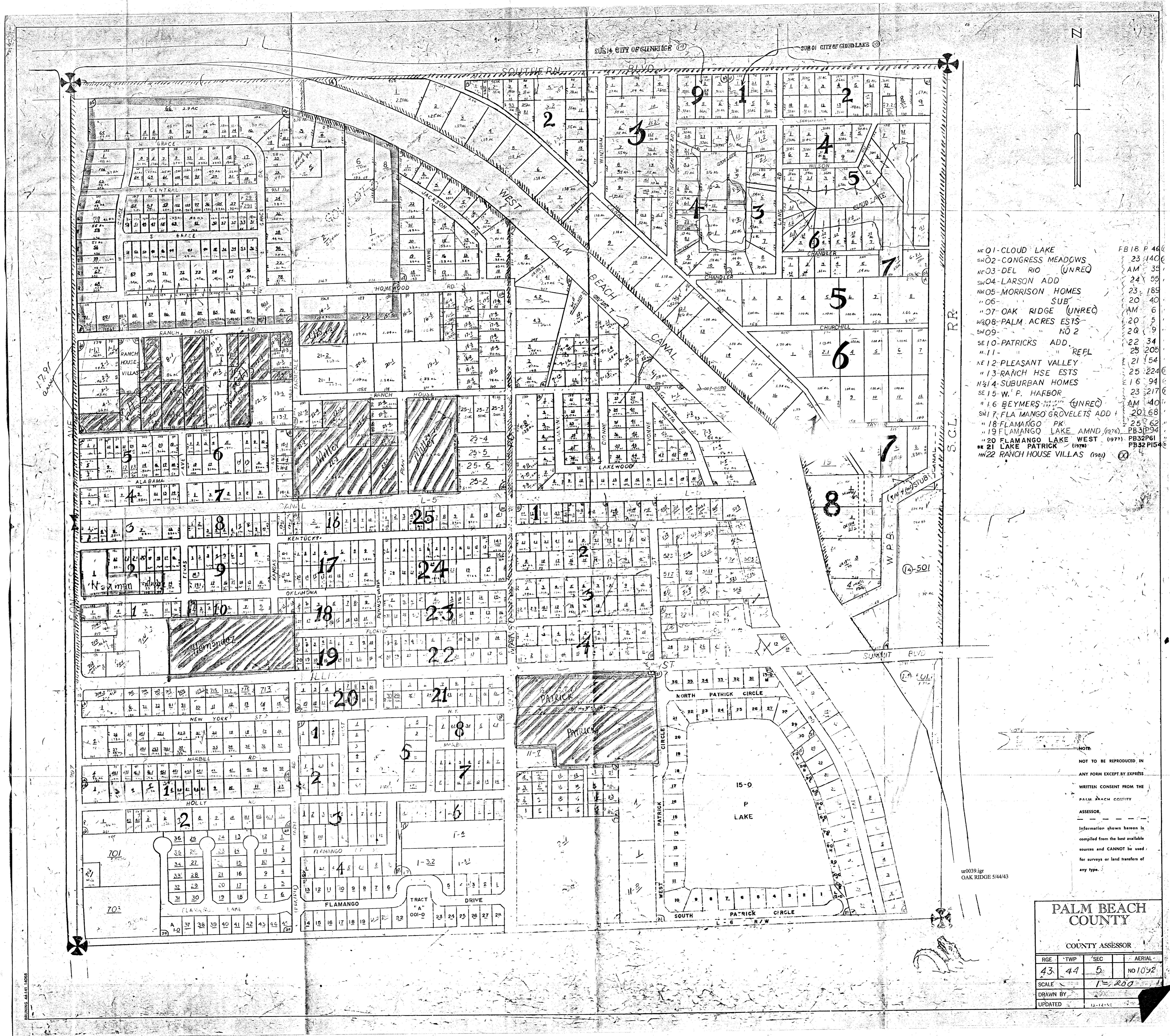


hh1-0008



- NE 01-CLOUD LAKE FB 18 P 466
- SW 02-CONGRESS MEADOWS 23 140
- NE 03-DEL RIO (UNREQ) AM 35
- SW 04-LARSON ADD 24 55
- NW 05-MORRISON HOMES 23 189
- " 06- SUB 20 40
- " 07-OAK RIDGE (UNREQ) AM 6
- W 08-PALM ACRES ESTS 20 5
- SW 09- NO 2 20 9
- SE 10-PATRICKS ADD. 22 34
- " 11- REFL 25 208
- NE 12-PLEASANT VALLEY 21 54
- " 13-RANCH HSE ESTS 25 224
- N 14-SUBURBAN HOMES 16 94
- SE 15-W. P. HARBOR 23 217
- " 16-BEYMERS (UNREQ) AM 40
- SW 17-FLAMANGO GROVELETS ADD 20 68
- " 18-FLAMANGO PK 25 62
- " 19-FLAMANGO LAKE AMND. (1976) PB 3134
- " 20-FLAMANGO LAKE WEST (1977) PB 3151
- " 21 LAKE PATRICK (1978) PB 32 156
- NW 22 RANCH HOUSE VILLAS (198) 20

NOTE
 NOT TO BE REPRODUCED IN ANY FORM EXCEPT BY EXPRESS WRITTEN CONSENT FROM THE PALM BEACH COUNTY ASSESSOR.
 Information shown hereon is compiled from the best available sources and CANNOT be used for surveys or land transfers of any type.

PALM BEACH COUNTY
 COUNTY ASSESSOR

RGE	TWP	SEC	AERIAL
43	44	5	NO 1092
SCALE			1" = 200'
DRAWN BY			
UPDATED			

3000-144